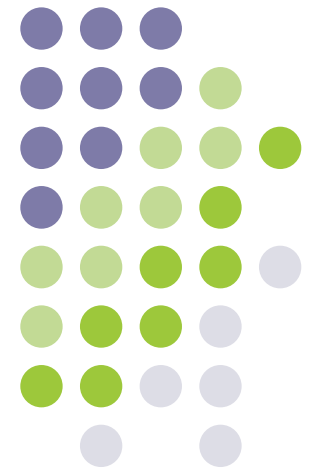
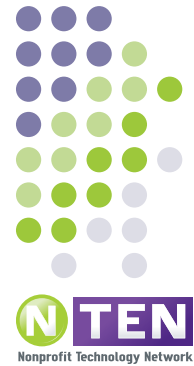


2008 IT Staffing Report: Data Highlights

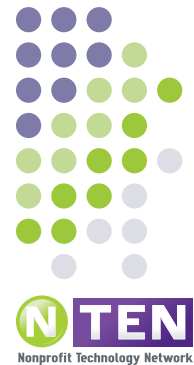


About NTEN

A movement of over 7,000 people collaborating to use technology to change the world.



Connect. Learn. Change the World. | nten.org



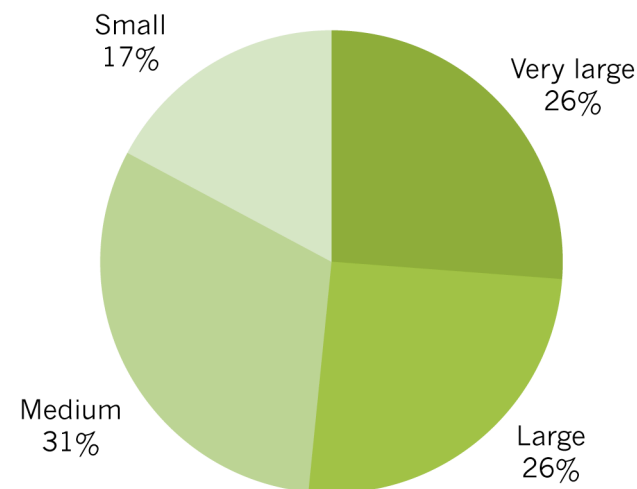
Survey Goals

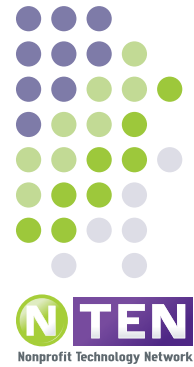
- Provide benchmarks for staffing and spending
- Monitor trends over time
- What do successful organizations have in common?

Who Responded

- 1026 Organizations
 - Small: Budgets under \$500,000
 - Medium: Budgets from \$500,000 to \$3 mil
 - Large: Budgets from \$3 million to \$10 million
 - Very Large: Budgets over \$10 million

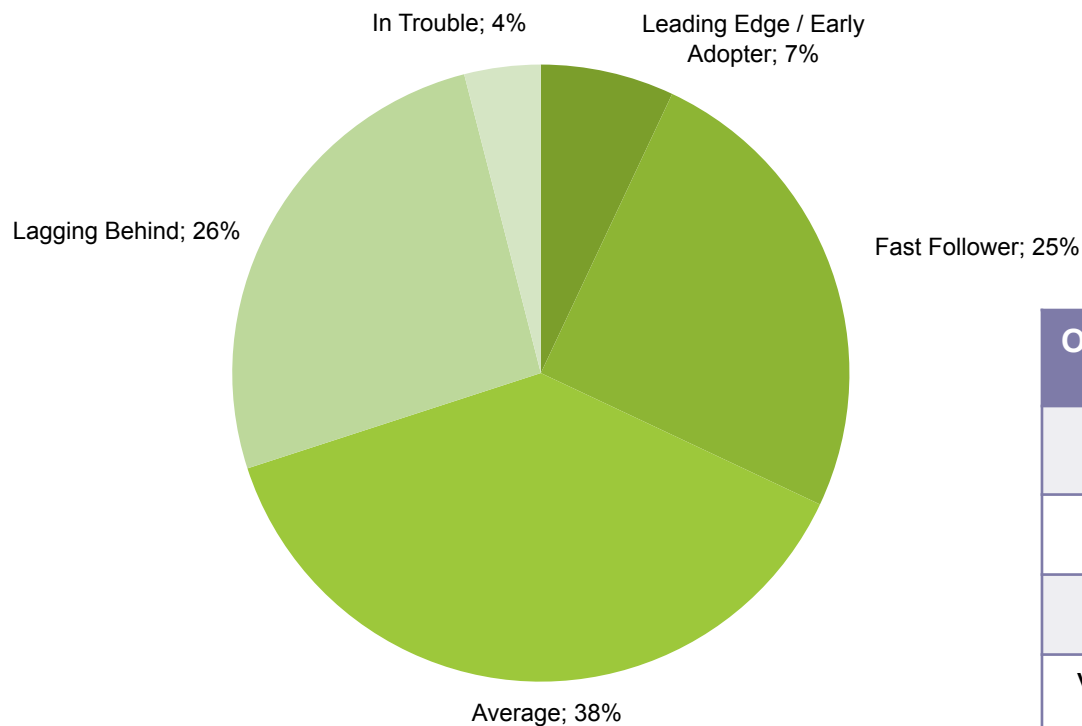
Responses by Organization Size



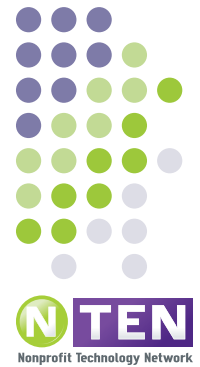


Leaders in IT Adoption

Self Reported IT Adoption Rates

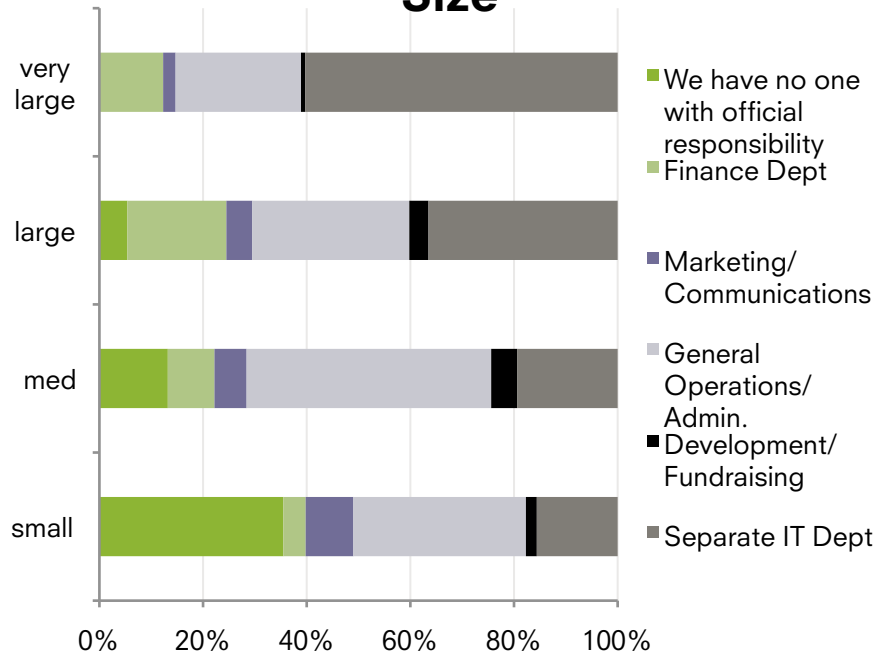


ORG SIZE	# LEADERS	# AVG/ BELOW
Small	30	192
Medium	78	203
Large	58	243
Very Large	77	147

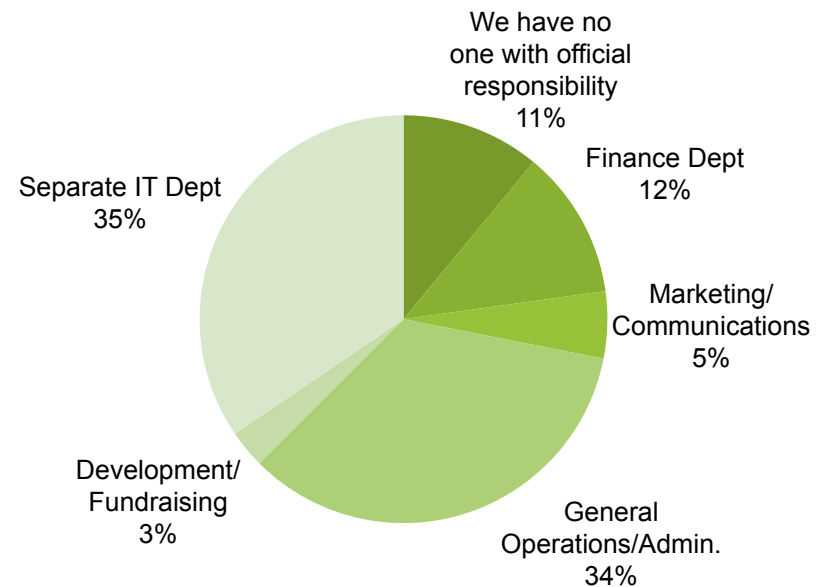


Location of IT

Location of IT by Nonprofit Size



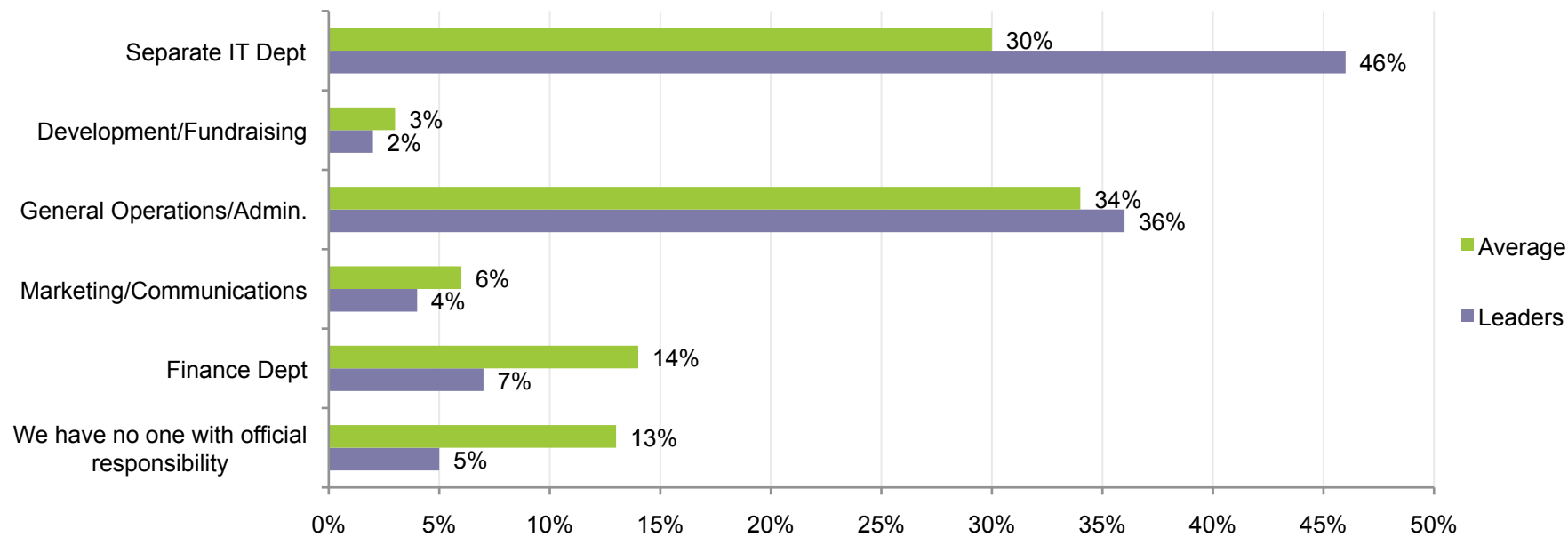
Location of IT in Organizations



Location of IT



Location of IT in Organizations: Leaders & Stragglers



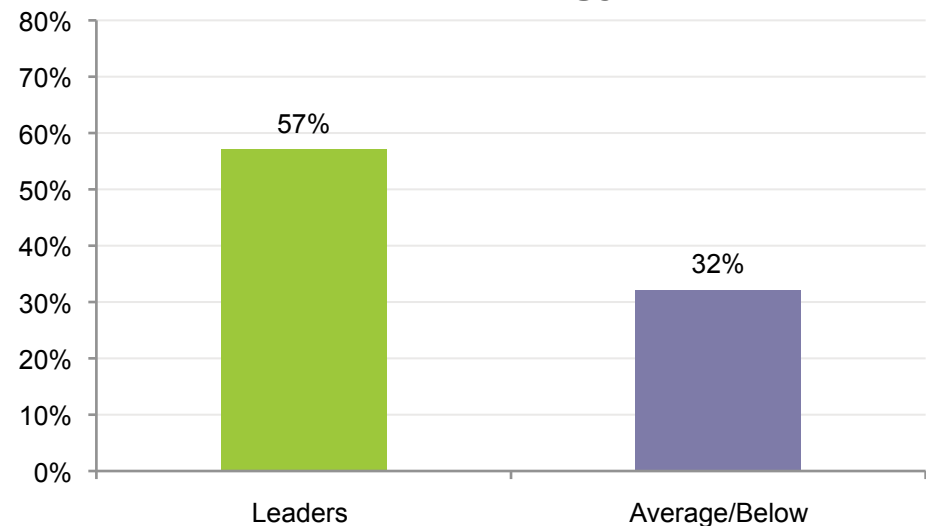
IT Planning

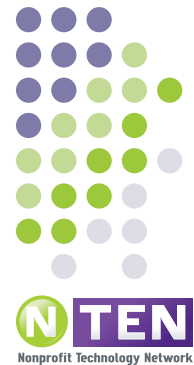


Does Your Nonprofit Maintain a Formal Technology Plan?

	YES	NO
2008	40%	60%
2007	36%	64%

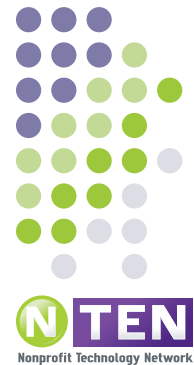
"Yes - My Organization Has an IT Technology Plan"





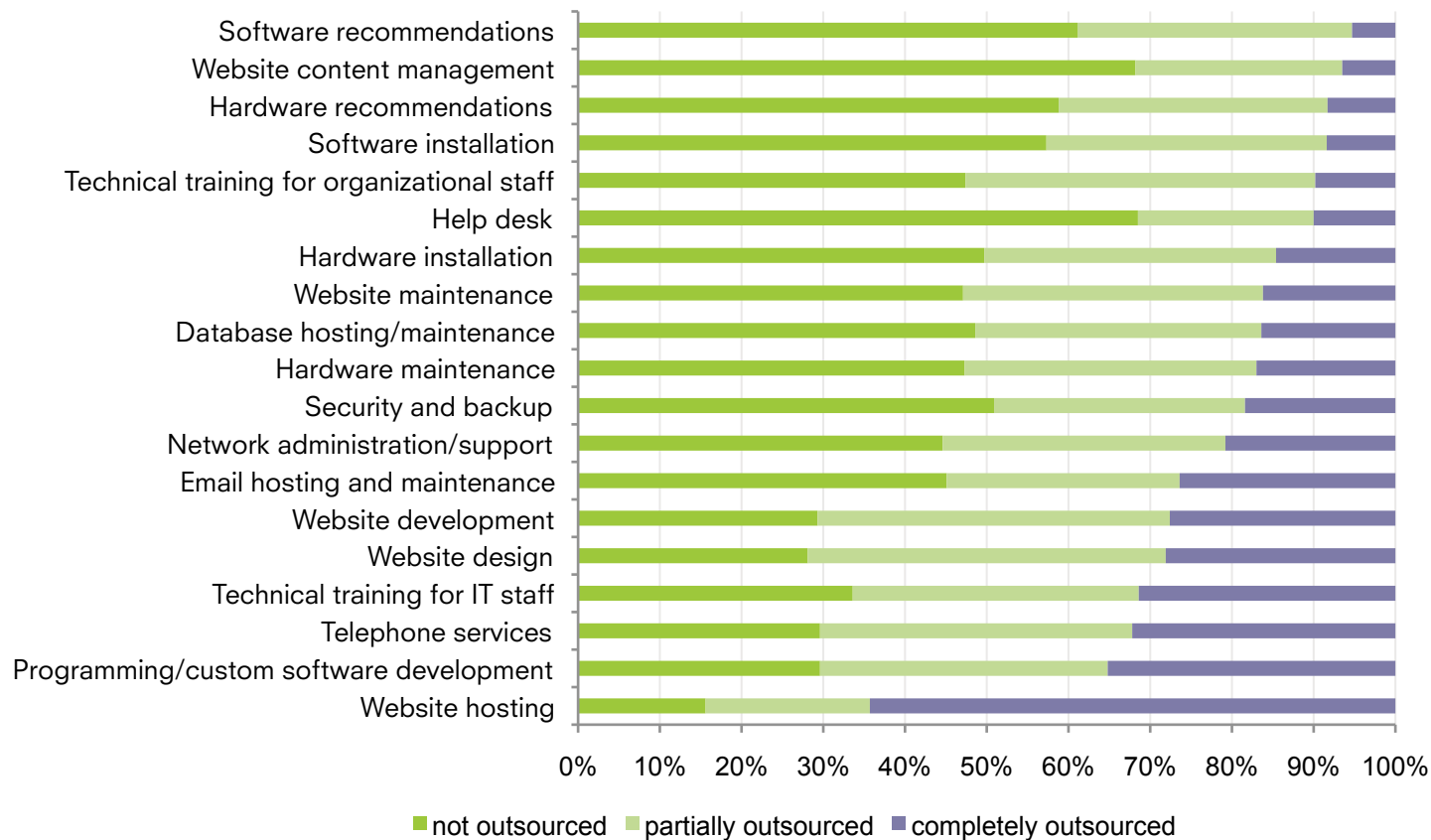
IT Staffing Levels

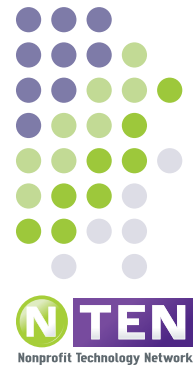
IT Staff Size	Small	Medium	Large	Very Large
None	26%	9%	5%	1%
Less than 1	38%	37%	19%	1%
1-2	29%	40%	52%	22%
3-5	4%	10%	18%	34%
6-10	2%	2%	3%	19%
11-20	1%	2%	0%	14%
More than 20	0%	0%	3%	9%



IT Outsourcing

Percentage of Respondents Outsourcing Common IT Functions

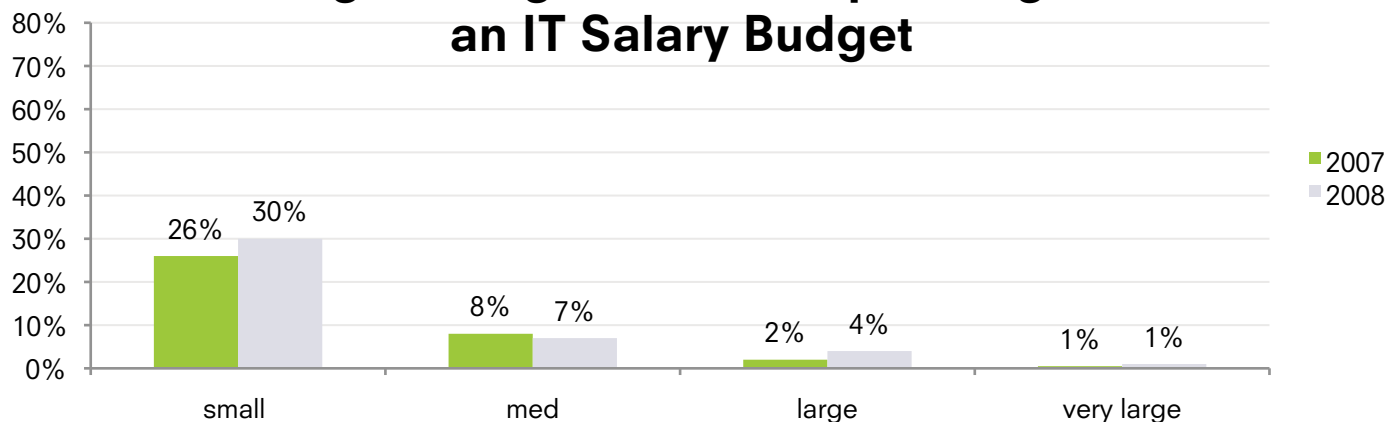


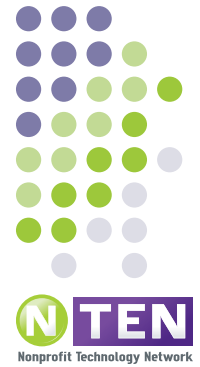


IT Spending – Salaries

Nonprofit Size	Median	Average
Small	\$7,000	\$44,807
Medium	\$47,000	\$91,330
Large	\$80,000	\$165,464
Very Large	\$210,000	\$519,067

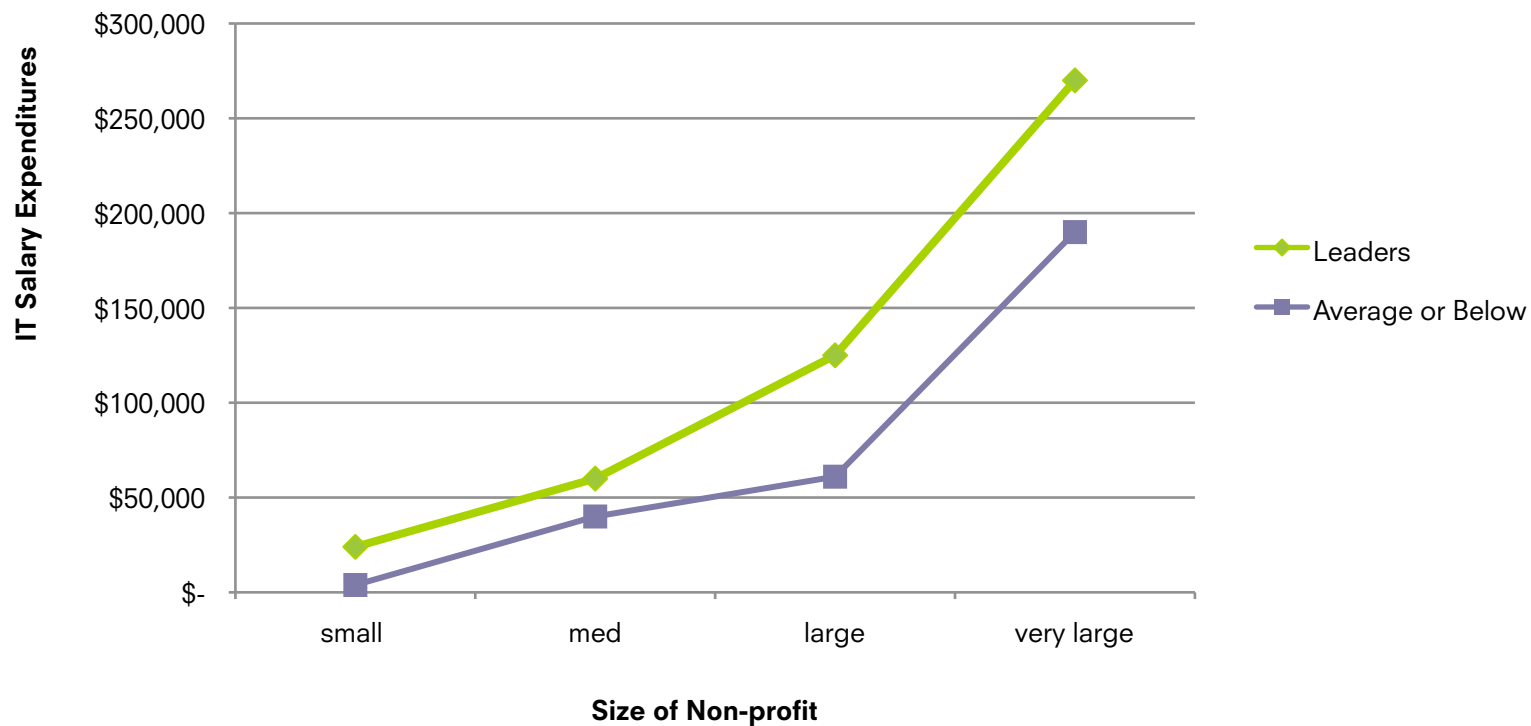
Percentage of Organizations Operating Without an IT Salary Budget

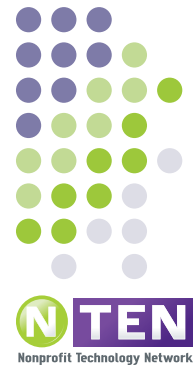




IT Spending – Salaries

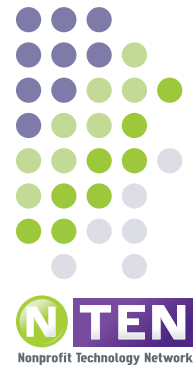
IT Adoption and Median Spending on IT Salaries





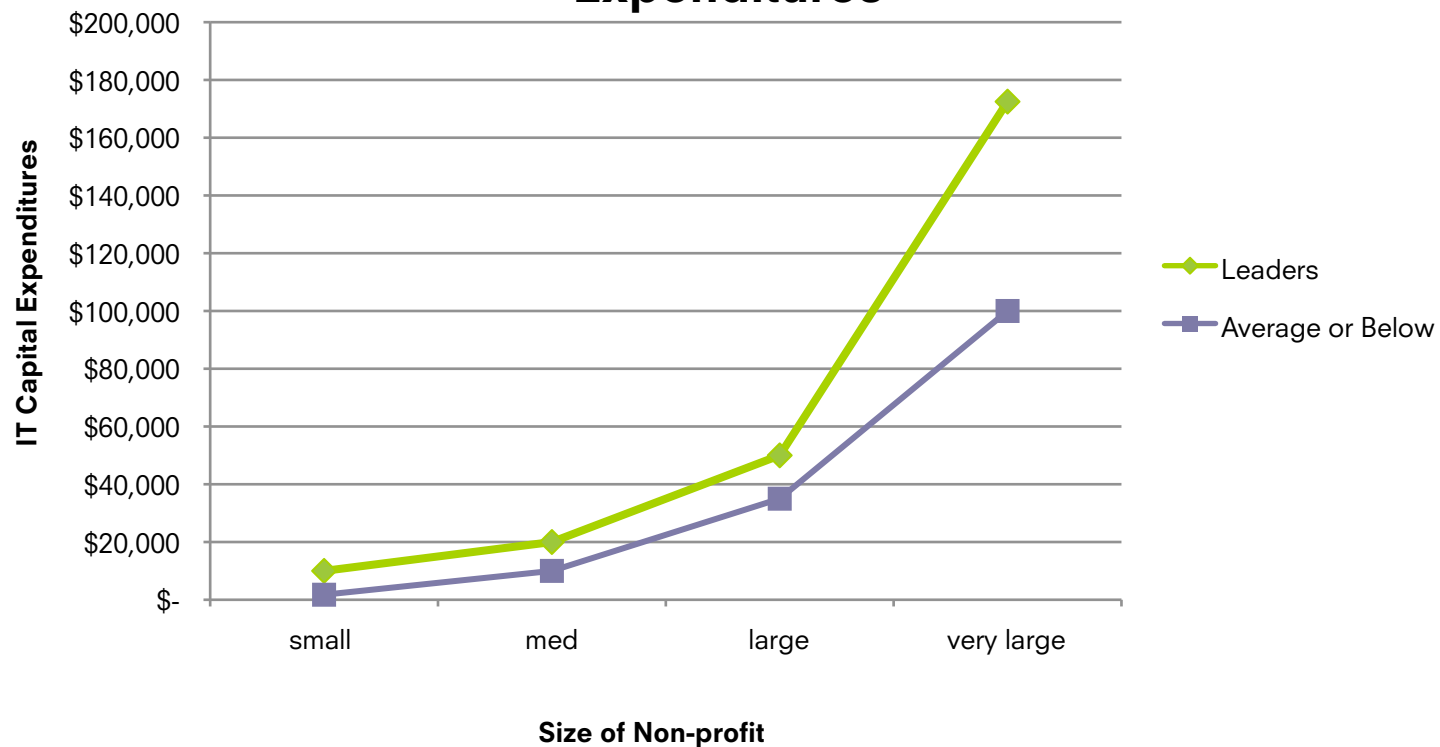
IT Spending – Capital Expenses

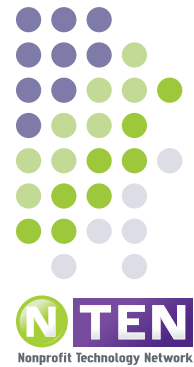
Nonprofit Size	Median	Average
Small	\$2,500	\$28,175
Medium	\$10,250	\$74,943
Large	\$37,500	\$135,169
Very Large	\$126,250	\$608,242



IT Spending – Capital Expenses

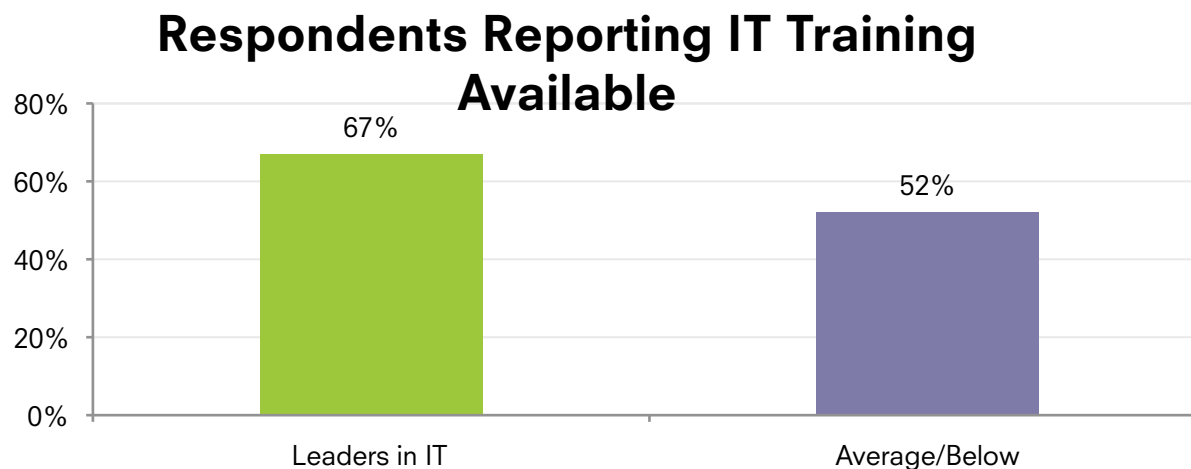
IT Adoption and Median Spending on IT Capital Expenditures





IT Spending - Training

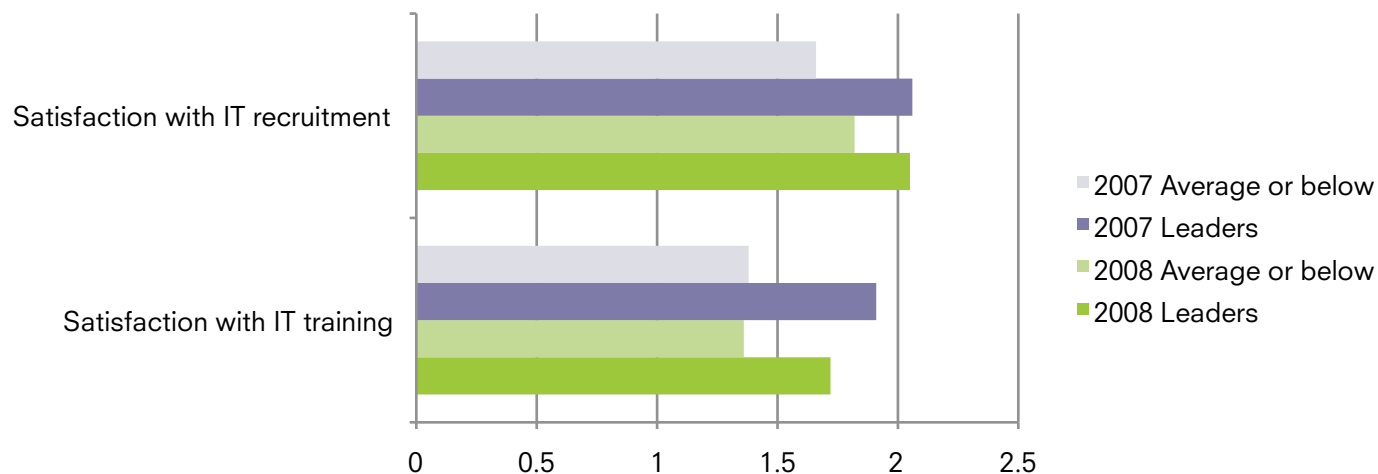
Nonprofit Size	Median	Average
Small	\$1,000	\$2,784
Medium	\$1,000	\$11,023
Large	\$3,000	\$22,138
Very Large	\$8,500	\$81,004

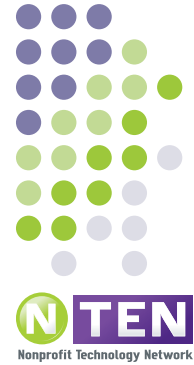


Traits of the Leaders

- More Planning
- More Training
- More Investment

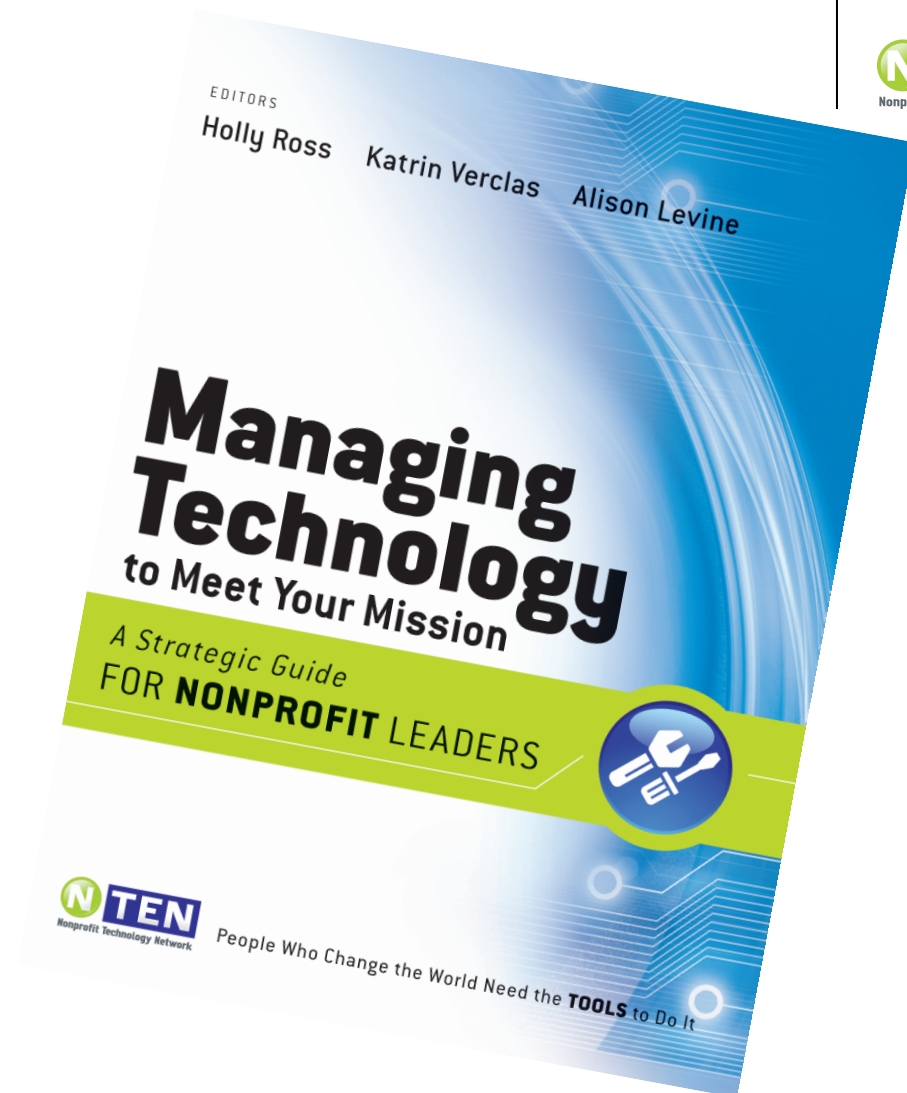
Leaders in IT Adoption Report Higher Satisfaction 2007-2008





IT Leadership

- Tech Planning
- Budgeting
- Staffing
- And much more!



Connect. Learn. Change the World. | nten.org